



شركة الاستثمار الوطنية
NATIONAL INVESTMENTS COMPANY

Bursa Kuwait – Daily Market Report MENA Securities – Research & Studies Dep.

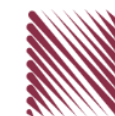
11th October 2022



www.nic.com.kw

DAILY MARKET COVERAGE REPORT

NIC MENA SECURITIES - RESEARCH AND STUDIES DEP



Kuwait Market Watch

Tuesday, October 11, 2022

Index	Close	DTD Chg Net	DTD (%)	YTD (%)	52W High	52W Low	MKT CAP Bn (KD)	PBV (X)	PE (X)	DY (%)
All Share Index	7,045.48	42.48	0.61%	0.03%	8,472.15	6,788.83	45.03	1.99	30.63	4.10
Premier Index	7,894.62	63.53	0.81%	0.34%	9,437.37	7,343.90	36.24	2.19	31.49	4.51
Main Index	5,259.81	-11.96	-0.23%	-10.64%	6,600.62	5,190.37	8.79	1.16	27.08	2.44
NIC 50 Index	8,840.53	71.89	0.82%	3.73%	10,553.82	8,195.69	35.54	2.19	31.49	4.51

Index	Value Mn(KD)	Volume (Mn share)
All Share Index	52.27	137.83
Premier Index	45.33	74.26
Main Index	6.93	63.57
NIC 50 Index	50.10	111.42

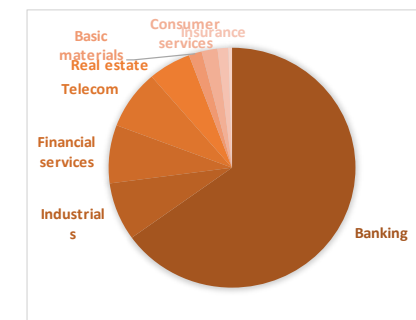
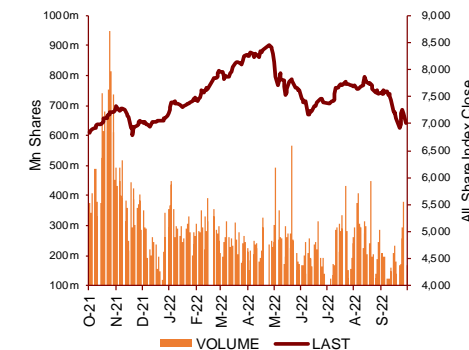
Today's Top 5 Gainer %	Close KD	Value KD	DTD (%)
Energy House Holding	0.021	3,122.177	10.22%
Kuwait Finance and Investment	0.066	939	6.45%
Kuwait Financial Centre	0.109	5,540	5.83%
Jiyad Holding	0.025	201,043.209	5.04%
Osoul Investment	0.077	603.574	4.94%

Today's Top 5 by Value	Close KD	Trade Val Mn(KD)	DTD (%)
Kuwait Finance House	0.786	25.19	1.42%
Agility Public Warehousing	0.677	6.86	3.52%
National Bank of Kuwait	1.023	3.07	0.29%
Boubyan Bank	0.805	1.39	1.00%
Mobile Telecommunications	0.587	1.34	0.34%

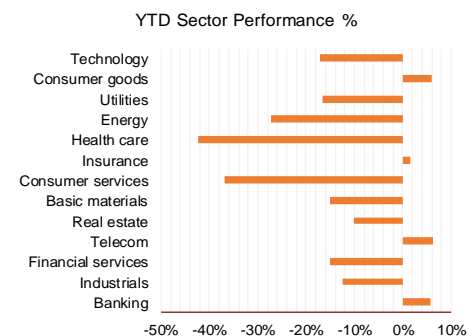
Market Breadth	UP	Down	No Chg
All Share Index	62	39	53
Premier Index	15	7	4
Main Index	47	32	49
NIC 50 Index	30	16	4

Today's Top 5 Loser %	Close KD	Value KD	DTD (%)
Al-Enmaa Real Estate	0.059	78,272	-8.63%
Educational Holding Group	2.835	2,603	-5.50%
Sokouk Holding	0.023	3,564	-5.33%
Kuwait Real Estate Holding	0.034	0	-5.00%
Kuwait Company for Proce:	0.305	12,636	-4.98%

Top 5 by Volume	Close KD	Trade Vol Mn(Shrs)	DTD (%)
Kuwait Finance House	0.786	31.99	1.42%
Agility Public Warehousing	0.677	10.23	3.52%
Jiyad Holding	0.025	7.96	5.04%
Commercial Real Estate	0.100	7.80	1.21%
National Consumer Holding	0.106	7.69	0.00%



Sector	Close	DTD Chg Net	DTD (%)	YTD (%)	52W High	52W Low	MKT CAP Bn (KD)	PBV (X)	PE (X)	DY (%)
Banking	1,729.52	12.160	0.71%	5.8%	1,992.2	1,552.3	28.930	1.60	24.26	1.91
Industrials	1,017.85	18.970	1.90%	-12.5%	1,443.6	976.3	3.477	1.00	19.29	3.87
Financial services	1,212.50	2.820	0.23%	-15.0%	1,678.3	1,190.4	3.487	0.97	29.67	3.08
Telecom	1,157.97	0.160	0.01%	6.3%	1,514.7	1,055.9	3.543	1.31	13.25	3.00
Real estate	1,193.96	2.980	0.25%	-10.2%	1,438.0	1,155.8	2.494	0.69	35.74	1.37
Basic materials	867.31	-4.250	-0.49%	-15.0%	1,233.3	846.0	0.756	1.23	9.13	6.16
Consumer services	463.21	2.020	0.44%	-36.9%	792.7	449.8	0.926	2.27	27.53	1.74
Insurance	1,568.36	9.050	0.58%	1.7%	1,675.7	1,430.3	0.625	0.84	45.86	5.27
Health care	459.73	0.000	0.00%	-42.3%	821.7	420.4	0.214	15.73	12.57	0.96
Energy	1,031.21	-7.900	-0.76%	-27.2%	1,592.9	975.7	0.209	0.80	20.55	2.33
Utilities	505.26	5.260	1.05%	-16.7%	650.0	497.4	0.211	2.16	14.70	9.47
Consumer goods	1,399.00	-18.890	-1.33%	6.1%	1,641.0	1,126.8	0.140	0.91	38.11	2.15
Technology	567.45	0.000	0.00%	-17.0%	843.9	539.1	0.008	0.69	NM	-
	7,045.48	42.48	0.61%	0.0%	8,472.2	6,788.8	45.03	1.99	30.63	4.10



DAILY MARKET COVERAGE REPORT

NIC MENA SECURITIES - RESEARCH AND STUDIES DEP

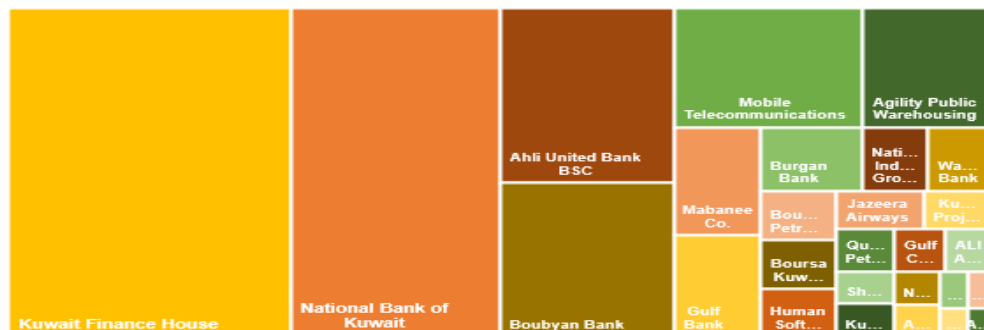


Premier Market

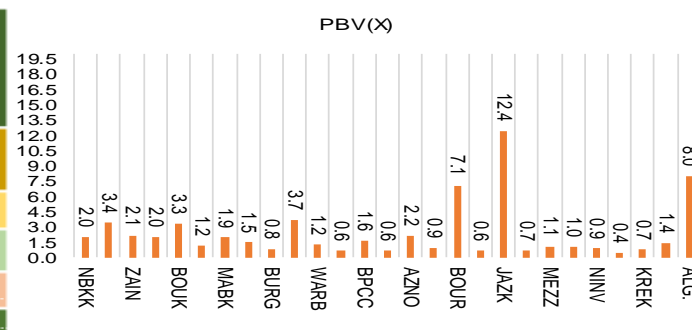
Tuesday, October 11, 2022

Premier Market	Price			Valuation Multiples			MKT Cap	Price Performance		Trading Indicators		ROE	ROA	52 Week (KD)		MKT Cap
	Close (KD)	Day Δ	Day % Δ	PBV(X)	PE(X)	DY%	Mn KD	MTD(%)	YTD (%)	Value (Mn KD)	(Mn Shrs)	(%)	(%)	High	Low	%
National Bank of Kuwait	1.023	0.003	0.29%	1.98	18.49	2.38	7,726	5%	8%	3.07	3.01	10.9%	1.4%	1.104	0.890	21.45%
Kuwait Finance House	0.786	0.011	1.42%	3.37	26.69	1.41	10,400	-7%	4%	25.19	31.99	12.8%	1.6%	1.039	0.720	28.87%
Mobile Telecommunications	0.587	0.002	0.34%	2.14	13.87	5.64	2,540	0%	-1%	1.34	2.28	15.6%	4.3%	0.698	0.564	7.05%
Ahli United Bank BSC	0.305	0.000	0.00%	2.04	17.93	2.72	3,400	0%	21%	0.00	0.00	11.3%	1.6%	0.336	0.240	9.44%
Boubyan Bank	0.805	0.008	1.00%	3.25	53.07	0.57	3,009	5%	13%	1.39	1.72	6.7%	0.8%	0.965	0.681	8.35%
Agility Public Warehousing	0.677	0.023	3.52%	1.16	52.00	2.55	1,710	1%	-14%	6.86	10.23	2.7%	2.2%	1.062	0.634	4.75%
Mabaneer Co.	0.850	0.000	0.00%	1.94	17.98	1.55	1,055	-2%	14%	1.06	1.24	11.2%	5.4%	0.910	0.715	2.93%
Gulf Bank	0.315	0.003	0.96%	1.47	17.83	2.14	997	5%	19%	0.55	1.76	8.5%	0.8%	0.385	0.225	2.77%
Burgan Bank	0.218	0.004	1.87%	0.80	18.46	2.23	716	-2%	-9%	0.08	0.35	4.3%	0.7%	0.307	0.205	1.99%
Human Soft Holding	3.298	-0.002	-0.06%	3.65	7.62	12.12	401	1%	2%	0.32	0.10	48.7%	39.9%	3.704	3.006	1.11%
Warba Bank	0.223	0.001	0.45%	1.22	26.42	0.00	446	1%	-19%	0.63	2.83	4.8%	0.6%	0.298	0.216	1.24%
Qurain Petrochemical Industries	0.259	-0.002	-0.77%	0.64	9.91	6.90	278	-4%	-25%	0.04	0.15	6.4%	5.2%	0.403	0.255	0.77%
Boubyan Petrochemical	0.800	-0.003	-0.37%	1.64	9.05	7.47	417	-4%	-6%	0.09	0.12	19.1%	10.1%	1.125	0.769	1.16%
Kuwait Projects Company Holding	0.118	0.000	0.00%	0.62	302.56	4.24	289	-11%	-17%	0.15	1.22	0.2%	0.1%	0.215	0.118	0.80%
Shamal Az-Zour Al-Oula Power & Water	0.192	0.002	1.05%	2.16	14.70	9.47	211	-2%	-16%	0.09	0.49	19.1%	2.9%	0.247	0.189	0.59%
National Industries Group Holding	0.219	0.000	0.00%	0.92	5.04	5.07	472	-4%	-9%	1.02	4.60	15.2%	6.5%	0.314	0.202	1.31%
Boursa Kuwait Securities Co	2.049	0.020	0.99%	7.06	21.91	3.20	411	-1%	1%	0.28	0.13	33.9%	22.2%	2.870	1.800	1.14%
Kuwait International Bank	0.199	0.002	1.02%	0.63	31.64	1.95	211	1%	-5%	0.27	1.34	1.9%	0.4%	0.259	0.192	0.59%
Jazeera Airways	1.720	-0.058	-3.26%	12.43	13.91	2.59	378	4%	33%	0.23	0.13	164.8%	12.1%	2.099	0.839	1.05%
Alafco Aviation Lease and Finance	0.174	-0.001	-0.57%	0.65	NM	0.00	166	0%	-20%	0.18	1.07	-15.9%	-3.4%	0.256	0.167	0.46%
Mezzan Holding	0.372	0.006	1.64%	1.09	38.11	4.29	116	-1%	-36%	0.75	2.03	2.8%	1.3%	0.631	0.358	0.32%
Gulf Cable and Electrical Industries	1.122	0.052	4.86%	1.04	10.40	5.61	234	5%	29%	0.14	0.12	11.0%	NM	1.850	0.835	0.65%
National Investments	0.223	-0.005	-2.19%	0.89	8.34	19.74	178	-3%	2%	0.80	3.55	10.9%	8.9%	0.475	0.194	0.49%
Alimtia Investment Group	0.075	0.001	1.35%	0.44	NM	12.16	77	-1%	-36%	0.02	0.32	-1.0%	-0.1%	0.140	0.069	0.21%
Kuwait Real Estate	0.101	0.001	1.00%	0.74	12.25	2.92	93	0%	-42%	0.18	1.77	6.0%	2.5%	0.187	0.097	0.26%
Integrated Holding	0.349	-0.007	-1.97%	1.44	26.68	2.81	88	-8%	-6%	0.57	1.64	5.4%	3.4%	0.478	0.344	0.25%
ALI ALGanim	0.790	0.010	1.28%	7.95	12.39	0.00	219	1%	nm	0.05	0.06	27.8%	10.9%	0.966	0.750	0.61%
Total		63.53	0.81%	2.19	31.49	4.51	36,020	-0.8%	3.3%	45.33	74.20					101%

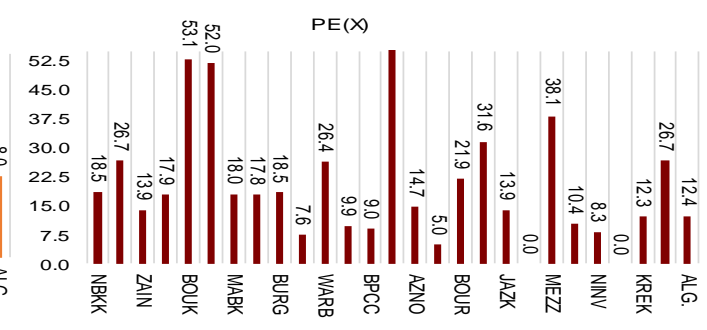
Market Capitalization



Price to Book Value

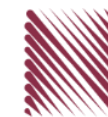


Price to Earning Value

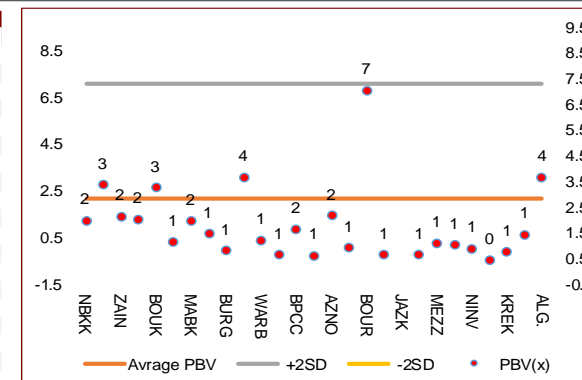


DAILY MARKET COVERAGE REPORT

NIC MENA SECURITIES - RESEARCH AND STUDIES DEP



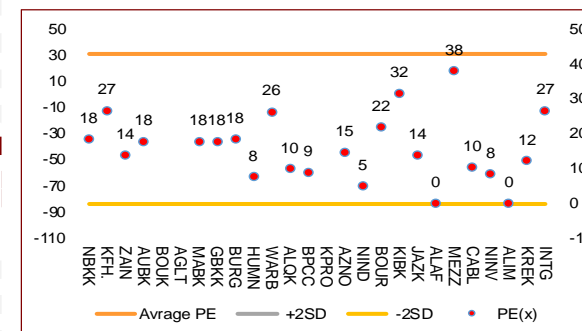
Premier Market	Price			Valuation Multiples			MKT Cap	Price Performance		ROE	ROA
Company	Close (KD)	Day Δ	Day % Δ	PBV(X)	PE (X)	DY%	Mn KD	MTD(%)	YTD (%)	(%)	(%)
National Bank of Kuwait	1.023	0.003	0.29%	1.98	18.5	2.38	7,726	4.8%	7.7%	10.9%	1.4%
Kuwait Finance House	0.786	0.011	1.42%	3.37	26.7	1.41	10,400	-6.8%	3.9%	12.8%	1.6%
Mobile Telecommunications	0.587	0.002	0.34%	2.14	13.9	5.64	2,540	0.2%	-1.3%	15.6%	4.3%
Ahli United Bank BSC	0.305	0.000	0.00%	2.04	17.9	2.72	3,400	0.0%	20.7%	11.3%	1.6%
Boubyan Bank	0.805	0.008	1.00%	3.25	53.1	0.57	3,009	5.2%	13.0%	6.7%	0.8%
Agility Public Warehousing	0.677	0.023	3.52%	1.16	52.0	2.55	1,710	1.3%	-14.0%	2.7%	2.2%
Mabane Co.	0.850	0.000	0.00%	1.94	18.0	1.55	1,055	-1.5%	13.6%	11.2%	5.4%
Gulf Bank	0.315	0.003	0.96%	1.47	17.8	2.14	997	5.0%	18.5%	8.5%	0.8%
Burgan Bank	0.218	0.004	1.87%	0.80	18.5	2.23	716	-1.8%	-8.8%	4.3%	0.7%
Human Soft Holding	3.298	-0.002	-0.06%	3.65	7.6	12.12	401	0.7%	2.3%	48.7%	39.9%
Warba Bank	0.223	0.001	0.45%	1.22	26.4	0.00	446	0.9%	-18.6%	4.8%	0.6%
Qurain Petrochemical Industries	0.259	-0.002	-0.77%	0.64	9.9	6.90	278	-4.4%	-25.4%	6.4%	5.2%
Boubyan Petrochemical	0.800	-0.003	-0.37%	1.64	9.0	7.47	417	-3.6%	-6.1%	19.1%	10.1%
Kuwait Projects Company Holding	0.118	0.000	0.00%	0.62	302.6	4.24	289	-11.3%	-16.9%	0.2%	0.1%
Shamal Az-Zour Al-Oula Power & Water	0.192	0.002	1.05%	2.16	14.7	9.47	211	-1.5%	-15.8%	19.1%	2.9%
National Industries Group Holding	0.219	0.000	0.00%	0.92	5.0	5.07	472	-4.4%	-9.1%	15.2%	6.5%
Boursa Kuwait Securities Co	2.049	0.020	0.99%	7.06	21.9	3.20	411	-1.4%	1.4%	33.9%	22.2%
Kuwait International Bank	0.199	0.002	1.02%	0.63	31.6	1.95	211	0.5%	-5.1%	1.9%	0.4%
Jazeera Airways	1.720	-0.058	-3.26%	12.43	13.9	2.59	378	3.9%	33.3%	164.8%	12.1%
Alafco Aviation Lease and Finance	0.174	-0.001	-0.57%	0.65	NM	0.00	166	0.0%	-20.2%	-15.9%	-3.4%
Mezzan Holding	0.372	0.006	1.64%	1.09	38.1	4.29	116	-0.5%	-35.6%	2.8%	1.3%
Gulf Cable and Electrical Industries	1.122	0.052	4.86%	1.04	10.4	5.61	234	4.9%	28.8%	11.0%	9.0%
National Investments	0.223	-0.005	-2.19%	0.89	8.3	19.74	178	-3.5%	1.8%	10.9%	8.9%
Alimtiiaz Investment Group	0.075	0.001	1.35%	0.44	NM	12.16	77	-0.7%	-36.4%	-1.0%	-0.1%
Kuwait Real Estate	0.101	0.001	1.00%	0.74	12.3	2.92	93	-0.4%	-42.1%	6.0%	2.5%
Integrated Holding	0.349	-0.007	-1.97%	1.44	26.7	2.81	88	-8.2%	-5.7%	5.4%	3.4%
ALI ALGanim	0.790	0.010	1.28%	3.65	12.4	0.00	219	0.6%	nm	27.8%	10.9%
Total	63.53	0.81%	2.19	31.49	4.51	36,020	-0.8%	3.2%	9,437	7,344	



Premier Market	Price			Moving Average		RSI	MKT Cap	Price Performance		52 Week (KD)	
Discription	Close (KD)	Day Δ	Day % Δ	50 Day	200 Day	14 Day	Mn KD	MTD(%)	YTD (%)	High	Low
Premier Index	7,895	63.53	0.81%	8,433	8,419	30	36,020	-0.8%	3.2%	9,437	7,344

Top 5 Performrs (Today's Price Change)

Gulf Cable and Electrical Industries	1.122	0.052	4.86%	1.360	1.313	35	234	4.9%	28.8%	1.850	0.835
Agility Public Warehousing	0.677	0.023	3.52%	0.804	0.859	32	1,710	1.3%	-14.0%	1.062	0.634
Burgan Bank	0.218	0.004	1.87%	0.234	0.254	30	716	-1.8%	-8.8%	0.307	0.205
Mezzan Holding	0.372	0.006	1.64%	0.409	0.506	26	116	-0.5%	-35.6%	0.631	0.358
Kuwait Finance House	0.786	0.011	1.42%	0.875	0.871	29	10,400	-6.8%	3.9%	1.039	0.720

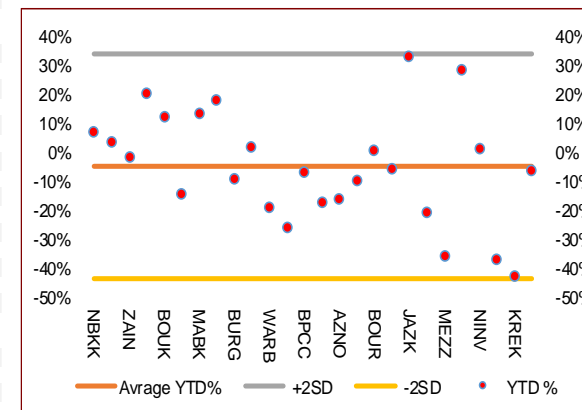


Middel Performrs (Today's Price Change)

Alimtiiaz Investment Group	0.075	0.001	1.35%	0.088	0.110	28	77	-0.7%	-36.4%	0.140	0.069
Shamal Az-Zour Al-Oula Power & Water	0.192	0.002	1.05%	0.199	0.214	29	211	-1.5%	-15.8%	0.247	0.189
Kuwait International Bank	0.199	0.002	1.02%	0.210	0.220	34	211	0.5%	-5.1%	0.259	0.192
Boubyan Bank	0.805	0.008	1.00%	0.821	0.801	49	3,009	5.2%	13.0%	0.965	0.681
Kuwait Real Estate	0.101	0.001	1.00%	0.120	0.150	30	93	-0.4%	-42.1%	0.187	0.097
Boursa Kuwait Securities Co	2.049	0.020	0.99%	2.306	2.355	31	411	-1.4%	1.4%	2.870	1.800
Gulf Bank	0.315	0.003	0.96%	0.339	0.316	43	997	5.0%	18.5%	0.385	0.225
Warba Bank	0.223	0.001	0.45%	0.241	0.263	31	446	0.9%	-18.6%	0.298	0.216
Mobile Telecommunications	0.587	0.002	0.34%	0.601	0.611	51	2,540	0.2%	-1.3%	0.698	0.564
National Bank of Kuwait	1.023	0.003	0.29%	0.100	0.100	46	7,726	4.8%	7.7%	1.210	0.996
Ahli United Bank BSC	0.305	0.000	0.00%	0.305	0.283	50	3,400	0.0%	20.7%	0.336	0.240
Mabane Co.	0.850	0.000	0.00%	0.839	0.808	34	1,055	-1.5%	13.6%	0.910	0.715
Kuwait Projects Company Holding	0.118	0.000	0.00%	0.149	0.164	18	289	-11.3%	-16.9%	0.215	0.118
National Industries Group Holding	0.219	0.000	0.00%	0.261	0.260	22	472	-4.4%	-9.1%	0.314	0.202
Human Soft Holding	3.298	-0.002	-0.06%	3.358	3.310	44	401	0.7%	2.3%	3.704	3.006

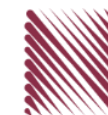
Bottom 5 Performrs (Today's Price Change)

Boubyan Petrochemical	0.800	-0.003	-0.37%	0.894	0.941	13	417	-3.6%	-6.1%	1.125	0.769
Alafco Aviation Lease and Finance	0.174	-0.001	-0.57%	0.190	0.206	32	166	0.0%	-20.2%	0.256	0.167
Qurain Petrochemical Industries	0.259	-0.002	-0.77%	0.304	0.349	10	278	-4.4%	-25.4%	0.403	0.255
Integrated Holding	0.349	-0.007	-1.97%	0.397	0.401	28	88	-8.2%	-5.7%	0.478	0.344
National Investments	0.223	-0.005	-2.19%	0.279	0.313	31	178	-3.5%	1.8%	0.475	0.194



DAILY MARKET COVERAGE REPORT

NIC MENA SECURITIES - RESEARCH AND STUDIES DEP



Banking Sector	Price			Valuation Multiples			MKT Cap	Price Performance		Trading Indicators		ROE	ROA	52 Week (KD)		MKT Cap
	Company	Close (KD)	Day Δ	Day % Δ	PBV(X)	PE(X)		DY%	Mn KD	MTD(%)	YTD (%)			Value (Mn KD)	(Mn Shrs)	
National Bank of Kuwait	1.023	0.003	0.29%	1.98	18.49	2.38	7,726	4.8%	7.7%	3.07	3.01	10.9%	1.4%	1.104	0.890	17.16%
Kuwait Finance House	0.786	0.011	1.42%	3.37	26.69	1.41	10,400	-6.8%	3.9%	25.19	31.99	12.8%	1.6%	1.039	0.720	23.10%
Ahli United Bank BSC	0.305	0.000	0.00%	2.04	17.93	2.72	3,400	0.0%	20.7%	0.00	0.00	11.3%	1.6%	0.336	0.240	7.55%
Boubyan Bank	0.805	0.008	1.00%	3.25	53.07	0.57	3,009	5.2%	13.0%	1.39	1.72	6.7%	0.8%	0.965	0.681	6.68%
Commercial Bank of Kuwait	0.480	-0.007	-1.44%	1.14	11.96	4.11	951	-1.0%	-4.2%	0.00	0.01	9.9%	1.9%	0.549	0.466	2.11%
Gulf Bank	0.315	0.003	0.96%	1.47	17.83	2.14	997	5.0%	18.5%	0.55	1.76	8.5%	0.8%	0.385	0.225	2.21%
Burgan Bank	0.218	0.004	1.87%	0.80	18.46	2.23	716	-1.8%	-8.8%	0.08	0.35	4.3%	0.7%	0.307	0.205	1.59%
Ahli United Bank	0.259	-0.001	-0.38%	0.89	23.87	1.83	583	-0.8%	-12.0%	0.03	0.12	3.7%	0.7%	0.324	0.250	1.30%
Warba Bank	0.223	0.001	0.45%	1.22	26.42	0.00	446	0.9%	-18.6%	0.63	2.83	4.8%	0.6%	0.298	0.216	0.99%
Al Ahli Bank of Kuwait	0.277	-0.003	-1.07%	0.82	20.49	1.70	490	-6.1%	14.5%	0.00	0.02	4.0%	0.6%	0.355	0.213	1.09%
Kuwait International Bank	0.199	0.002	1.02%	0.63	31.64	1.95	211	0.5%	-5.1%	0.27	1.34	1.9%	0.4%	0.259	0.192	0.47%
Total Banking Sector - 11 Companies							28,930			31.22	43.14					64.25%

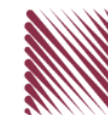
Basic Materials	Price			Valuation Multiples			MKT Cap	Price Performance		Trading Indicators		ROE	ROA	52 Week (KD)		MKT Cap
	Company	Close (KD)	Day Δ	Day % Δ	PBV(X)	PE(X)		DY%	Mn KD	MTD(%)	YTD (%)			Value (Mn KD)	(Mn Shrs)	
Qurain Petrochemical Industries	0.259	-0.002	-0.77%	0.64	9.91	6.90	278	-4.43%	-25.36%	0.04	0.15	6.4%	5.2%	0.403	0.255	0.62%
Boubyan Petrochemical	0.800	-0.003	-0.37%	1.64	9.05	7.47	417	-3.61%	-6.10%	0.09	0.12	19.1%	10.1%	1.125	0.769	0.93%
Al Kout Industrial Projects	0.390	0.000	0.00%	1.40	4.93	10.26	39	-3.94%	-21.37%	0.00	0.00	30.5%	20.1%	0.545	0.390	0.09%
Kuwait Foundry	0.296	0.000	0.00%	1.23	12.61	0.00	21	2.07%	-19.78%	0.00	0.00	10.7%	10.3%	0.424	0.260	0.05%
Total Basic Materials - 4 Companies							756			0.13	0.27					1.68%

Consumer Goods	Price			Valuation Multiples			MKT Cap	Price Performance		Trading Indicators		ROE	ROA	52 Week (KD)		MKT Cap
	Company	Close (KD)	Day Δ	Day % Δ	PBV(X)	PE(X)		DY%	Mn KD	MTD(%)	YTD (%)			Value (Mn KD)	(Mn Shrs)	
Mezzan Holding	0.372	0.006	1.64%	1.09	38.11	4.29	116	-0.5%	-35.6%	0.75	2.03	2.8%	1.3%	0.631	0.358	0.26%
Livestock Transport and Trading	0.117	-0.006	-4.88%	0.72	NM	0.00	24	-2.5%	-35.7%	0.00	0.01	-14.5%	-8.2%	0.196	0.114	0.05%
Total Consumer Goods - 2 Companies							140			0.76	2.04					0.31%

Consumer Services	Price			Valuation Multiples			MKT Cap	Price Performance		Trading Indicators		ROE	ROA	52 Week (KD)		MKT Cap
	Company	Close (KD)	Day Δ	Day % Δ	PBV(X)	PE(X)		DY%	Mn KD	MTD(%)	YTD (%)			Value (Mn KD)	(Mn Shrs)	
Jazeera Airways	1.720	-0.058	-3.26%	12.43	13.91	2.59	378	3.9%	33.3%	0.23	0.13	164.8%	12.1%	2.099	0.839	0.84%
Kuwait National Cinema	0.900	0.010	1.12%	1.10	8.76	3.37	83	1.1%	2.0%	0.00	0.00	13.3%	6.1%	0.933	0.815	0.19%
Oula Fuel Marketing	0.143	-0.003	-2.05%	0.88	15.43	3.42	58	-1.4%	-8.3%	0.00	0.03	5.6%	2.9%	0.178	0.140	0.13%
Al Soor Fuel Marketing	0.144	-0.005	-3.36%	0.85	18.37	3.36	58	-4.0%	-7.1%	0.00	0.02	4.8%	3.6%	0.175	0.142	0.13%
Sultan Center Food Products	0.108	0.000	0.00%	0.62	0.86	0.00	30	-6.1%	-48.6%	0.01	0.07	74.2%	12.2%	0.269	0.103	0.07%
Jiyad Holding	0.025	0.001	5.04%	0.29	NM	0.00	5	-6.4%	-69.0%	0.20	7.96	-16.2%	-10.9%	0.099	0.015	0.01%
IFA Hotels and Resorts	0.027	0.000	1.12%	3.56	180.00	0.00	17	-2.5%	-49.5%	0.01	0.21	2.0%	0.4%	0.073	0.025	0.04%
Kuwait Resorts	0.076	0.002	2.03%	0.49	10.63	3.97	15	-2.7%	-21.7%	0.00	0.04	4.8%	4.2%	0.110	0.067	0.03%
Future Kid Entertainment and Real Estate	0.109	0.001	0.93%	0.94	9.54	0.00	12	0.0%	38.5%	0.00	0.02	10.4%	4.7%	0.130	0.074	0.03%
Al Eid Food	0.219	-0.003	-1.35%	1.73	13.31	3.08	37	-0.9%	-5.1%	0.11	0.51	13.5%	10.1%	0.304	0.207	0.08%
Kuwait Hotels	0.170	-0.008	-4.49%	2.13	19.68	2.81	10	-7.6%	142.9%	0.00	0.00	11.1%	7.4%	0.201	0.070	0.02%
Palms Agro Production	0.077	0.000	0.00%	0.78	NM	0.00	4	0.0%	12.3%	0.00	0.00	-13.8%	-10.9%	0.090	0.043	0.01%
ALI ALGanim	0.790	0.010	1.28%	3.65	12.39	0.00	219	0.6%	nm	0.05	0.06	27.8%	10.9%	0.966	0.750	0.49%
Total Consumer Services - 13 Companies							926			0.61	9.05					2.06%

DAILY MARKET COVERAGE REPORT

NIC MENA SECURITIES - RESEARCH AND STUDIES DEP



Financial Services	Price			Valuation Multiples			MKT Cap	Price Performance		Trading Indicators		ROE	ROA	52 Week (KD)		MKT Cap
	Company	Close (KD)	Day Δ	Day % Δ	PBV(X)	PE(X)		DY%	Mn KD	MTD(%)	YTD (%)			Value (Mn KD)	(Mn Shrs)	
Egypt Kuwait Holding	0.380	0.000	0.00%	2.22	6.02	5.62	428	-1.0%	-10.4%	0.00	0.01	37.1%	17.5%	0.465	0.353	0.95%
Kuwait Projects Company Holding	0.118	0.000	0.00%	0.62	302.56	4.24	289	-11.3%	-16.9%	0.15	1.22	0.2%	0.1%	0.215	0.118	0.64%
National Industries Group Holding	0.219	0.000	0.00%	0.92	5.04	5.07	472	-4.4%	-9.1%	1.02	4.60	15.2%	6.5%	0.314	0.202	1.05%
Boursa Kuwait Securities Co	2.049	0.020	0.99%	7.06	21.91	3.20	411	-1.4%	1.4%	0.28	0.13	33.9%	22.2%	2.870	1.800	0.91%
GFH Financial Group	0.076	0.001	1.07%	0.90	9.62	4.84	264	-2.4%	-22.9%	0.49	6.47	9.3%	1.2%	0.109	0.065	0.59%
National Investments	0.223	-0.005	-2.19%	0.89	8.34	19.74	178	-3.5%	1.8%	0.80	3.55	10.9%	8.9%	0.475	0.194	0.40%
Tamdeen Investment	0.470	0.000	0.00%	0.54	12.15	2.13	160	-1.1%	24.0%	0.01	0.03	4.9%	3.8%	0.519	0.309	0.36%
Alimtiq Investment Group	0.075	0.001	1.35%	0.44	NM	12.16	77	-0.7%	-36.4%	0.02	0.32	-1.0%	-0.1%	0.140	0.069	0.17%
Commercial Facilities	0.174	0.002	1.16%	0.56	6.44	8.72	88	1.2%	-15.5%	0.03	0.19	8.8%	5.0%	0.228	0.165	0.20%
Aayan Leasing and Investment	0.109	0.001	0.93%	0.83	11.18	0.00	72	-2.7%	-34.1%	0.27	2.47	7.7%	5.8%	0.204	0.104	0.16%
Kuwait Investment	0.129	0.002	1.57%	0.62	7.48	19.69	71	0.0%	-54.1%	0.15	1.16	8.1%	4.6%	0.317	0.113	0.16%
Noor Financial Investment	0.179	0.003	1.70%	1.11	5.01	2.73	91	-0.6%	-29.6%	0.01	0.05	22.7%	16.0%	0.319	0.163	0.20%
Arzan Financial Group for Financing and Investmei	0.117	-0.002	-1.68%	0.78	7.34	2.03	94	-3.3%	-24.8%	0.02	0.22	11.3%	8.2%	0.180	0.109	0.21%
Kuwait Financial Centre	0.109	0.006	5.83%	0.53	8.25	9.25	55	-9.2%	-36.8%	0.01	0.05	6.9%	4.0%	0.197	0.101	0.12%
Gulf Investment House	0.391	-0.014	-3.46%	3.73	NM	0.00	159	-4.2%	30.3%	0.47	1.15	-3.0%	-2.0%	0.422	0.217	0.35%
Arabi Group Holdings	0.247	-0.002	-0.80%	1.47	NM	0.00	41	-8.2%	-15.1%	0.03	0.11	-29.0%	-4.0%	0.499	0.142	0.09%
Kuwait and Middle East Financial Investment	0.110	0.000	0.00%	0.95	12.81	6.36	24	-4.3%	-26.7%	0.00	0.00	7.5%	5.2%	0.175	0.105	0.05%
Privatization Holding	0.034	0.002	4.94%	0.28	NM	0.00	21	-5.6%	-38.0%	0.01	0.18	-7.1%	-5.5%	0.070	0.032	0.05%
Asiya Capital Investments	0.039	0.000	0.26%	0.35	2.15	0.00	30	-3.0%	-25.0%	0.03	0.82	17.9%	17.6%	0.071	0.039	0.07%
Umm Al Qaiwain General Investment Co	0.093	0.000	0.00%	0.57	4.97	5.38	34	0.0%	6.7%	0.00	0.00	12.0%	10.0%	0.108	0.077	0.07%
Securities House	0.057	0.000	0.70%	0.58	9.81	0.00	24	0.5%	-41.9%	0.02	0.40	5.8%	5.0%	0.115	0.052	0.05%
Kamco Investment	0.096	0.003	3.56%	0.53	3.80	10.79	33	-2.9%	-25.6%	0.02	0.24	14.5%	6.9%	0.167	0.089	0.07%
First Investment	0.076	0.002	2.85%	0.66	108.43	0.00	34	6.0%	-9.9%	0.15	1.98	0.6%	0.7%	0.104	0.068	0.08%
Inovest BSC Public	0.077	0.001	1.19%	0.00	NM	0.00	23	-2.3%	-35.2%	0.04	0.49	2.7%	1.7%	0.189	0.070	0.05%
Coast Investment and Development	0.076	0.001	0.80%	0.75	10.33	6.68	35	-5.0%	-28.1%	0.03	0.46	7.2%	6.8%	0.126	0.066	0.08%
Al Madar Investment	0.101	0.000	0.00%	0.95	59.06	0.00	21	0.7%	-15.1%	0.00	0.00	1.6%	1.7%	0.128	0.083	0.05%
Bayan Investment	0.035	0.000	0.00%	0.31	NM	0.00	13	0.0%	-28.8%	0.00	0.00	-0.5%	-0.6%	0.060	0.031	0.03%
Al Manar Financing and Leasing	0.056	0.000	0.00%	0.55	18.08	0.00	15	5.1%	-11.0%	0.00	0.00	2.9%	2.3%	0.079	0.049	0.03%
Manazel Holding	0.026	-0.001	-4.01%	0.57	9.01	0.00	11	-7.4%	-48.6%	0.05	1.86	6.2%	2.0%	0.060	0.025	0.03%
Kuwait Finance and Investment	0.066	0.004	6.45%	0.49	28.70	0.00	20	3.1%	-24.0%	0.00	0.02	1.7%	1.6%	0.104	0.057	0.05%
National International Holding	0.100	0.000	0.00%	0.58	7.47	4.85	22	-7.4%	-32.2%	0.02	0.24	7.6%	5.3%	0.168	0.091	0.05%
Osoul Investment	0.077	0.004	4.94%	0.70	NM	14.52	10	5.7%	-6.4%	0.00	0.01	-4.4%	-4.0%	0.118	0.062	0.02%
UniCap Investment and Finance	0.054	-0.001	-1.82%	0.60	63.41	0.00	12	-6.6%	-21.3%	0.01	0.19	1.9%	0.2%	0.097	0.050	0.03%
Amar Finance and Leasing	0.061	0.000	0.00%	0.56	3.31	0.00	12	-4.2%	-6.9%	0.00	0.00	18.6%	17.3%	0.097	0.057	0.03%
Gulf North Africa Holding	0.135	0.001	0.75%	1.72	59.40	0.00	20	0.0%	56.8%	0.16	1.14	3.0%	2.4%	0.141	0.057	0.04%
International Financial Advisors	0.090	0.001	1.12%	0.58	36.14	0.00	22	-0.6%	-20.4%	0.00	0.00	1.9%	0.7%	0.129	0.082	0.05%
Credit Rating and Collection	0.016	0.000	0.00%	0.55	NM	0.00	3	-7.0%	-60.2%	0.00	0.00	-0.4%	-0.3%	0.069	0.014	0.01%
Ekttitab Holding	0.011	0.000	0.93%	0.35	NM	0.00	3	-1.8%	-49.3%	0.01	1.36	-16.8%	-12.9%	0.024	0.009	0.01%
Kuwait Syrian Holding Co	0.035	0.000	0.00%	0.34	5.65	0.00	6	-5.4%	-18.2%	0.00	0.00	8.7%	6.2%	0.060	0.026	0.01%
Warba Capital Holding	0.098	0.000	0.00%	1.09	NM	0.00	10	0.0%	14.0%	0.00	0.00	-0.8%	-0.7%	0.130	0.070	0.02%
National Consumer Holding	0.106	0.000	0.00%	4.80	NM	0.00	32	-5.4%	-11.6%	0.83	7.69	-8.0%	-7.5%	0.186	0.097	0.07%
Al Deera Holding	0.159	-0.008	-4.79%	1.06	8.01	0.00	15	-4.8%	-20.5%	0.00	0.00	12.5%	6.5%	0.200	0.145	0.03%
AL Safat Investment	0.104	0.000	0.00%	1.33	NM	0.00	29	-7.1%	-14.7%	0.56	5.35	-1.8%	-1.6%	0.270	0.099	0.07%
Gulf Franchising Holding	0.081	0.000	0.00%	1.59	NM	0.00	3	-2.3%	-15.5%	0.00	0.00	-5.7%	-1.6%	0.148	0.050	0.01%
Total Financial Services - 44 Companies							3,487			5.69	44.16					7.74%

DAILY MARKET COVERAGE REPORT

NIC MENA SECURITIES - RESEARCH AND STUDIES DEP

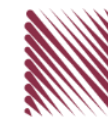


Health Care	Price			Valuation Multiples			MKT Cap	Price Performance		Trading Indicators		ROE	ROA	52 Week (KD)		MKT Cap
	Company	Close (KD)	Day Δ	Day % Δ	PBV(X)	PE(X)		DY%	Mn KD	MTD(%)	YTD (%)			Value (Mn KD)	(Mn Shrs)	
Al-Maidan Clinic for Oral Health Services	0.569	0.000	0.00%	2.51	13.90	0.00	128	0.0%	-54.1%	0.00	0.00	19.4%	12.5%	1.400	0.556	0.28%
Advanced Technology	0.520	0.000	0.00%	1.16	11.23	2.88	78	0.0%	0.4%	0.00	0.00	10.7%	2.1%	0.595	0.450	0.17%
Yiaco Medical	0.450	0.000	0.00%	43.51	NM	0.00	8	0.0%	2.7%	0.00	0.00	-161.7%	-4.7%	0.480	0.399	0.02%
Total Health Care - 3 Companies							214			0.00	0.00					0.47%

Industrials	Price			Valuation Multiples			MKT Cap	Price Performance		Trading Indicators		ROE	ROA	52 Week (KD)		MKT Cap
	Company	Close (KD)	Day Δ	Day % Δ	PBV(X)	PE(X)		DY%	Mn KD	MTD(%)	YTD (%)			Value (Mn KD)	(Mn Shrs)	
Agility Public Warehousing	0.677	0.023	3.52%	1.16	52.00	2.55	1,710	1.3%	-14.0%	6.86	10.23	2.7%	2.2%	1.062	0.634	3.80%
Human Soft Holding	3.298	-0.002	-0.06%	3.65	7.62	12.12	401	0.7%	2.3%	0.32	0.10	48.7%	39.9%	3.704	3.006	0.89%
Alafco Aviation Lease and Finance	0.174	-0.001	-0.57%	0.65	NM	0.00	166	0.0%	-20.2%	0.18	1.07	-15.9%	-3.4%	0.256	0.167	0.37%
Kuwait Cement	0.201	0.001	0.50%	0.73	NM	2.50	143	-2.9%	-13.0%	0.01	0.06	-1.1%	-0.7%	0.295	0.198	0.32%
Gulf Cable and Electrical Industries	1.122	0.052	4.86%	1.04	10.40	5.61	234	4.9%	28.8%	0.14	0.12	11.0%	9.0%	1.850	0.835	0.52%
Integrated Holding	0.349	-0.007	-1.97%	1.44	26.68	2.81	88	-8.2%	-5.7%	0.57	1.64	5.4%	3.4%	0.478	0.344	0.20%
Kuwait Portland Cement	0.780	0.000	0.00%	1.09	16.32	8.97	78	-4.2%	-20.4%	0.02	0.02	6.8%	5.3%	1.240	0.751	0.17%
Educational Holding Group	2.835	-0.165	-5.50%	4.82	10.77	17.76	60	-5.5%	-29.1%	0.00	0.00	30.0%	17.2%	5.073	2.744	0.13%
United Projects for Aviation Services	0.204	0.000	0.00%	0.75	72.86	0.00	77	-7.7%	-17.7%	0.00	0.00	1.0%	0.6%	0.318	0.182	0.17%
Heavy Engineering Industries and Shipbuilding	0.639	0.003	0.47%	1.71	21.11	3.14	115	-0.8%	25.5%	1.02	1.59	8.2%	3.2%	0.960	0.442	0.26%
National Industries	0.190	0.000	0.00%	0.76	11.08	5.26	67	5.0%	-1.6%	0.00	0.00	6.8%	5.1%	0.260	0.181	0.15%
ACICO Industries	0.082	0.001	1.23%	0.37	NM	0.00	27	-6.8%	-41.0%	0.04	0.45	-1.9%	-0.5%	0.208	0.076	0.06%
Kuwait Company for Process Plant Construction a	0.305	-0.016	-4.98%	1.23	19.77	7.71	36	1.3%	-35.7%	0.01	0.04	6.1%	3.5%	0.523	0.286	0.08%
Ras Al Khaimah for White Cement and Constructi	0.140	0.000	0.00%	1.24	27.79	5.92	70	-4.8%	11.1%	0.00	0.00	4.6%	3.7%	0.175	0.090	0.16%
Combined Group Contracting	0.378	0.008	2.16%	1.40	5.79	6.76	65	-5.3%	6.8%	0.04	0.12	26.3%	5.8%	0.500	0.308	0.14%
Kuwait and Gulf Link Transport	0.059	0.000	0.00%	0.35	3.16	0.00	16	3.5%	-14.2%	0.00	0.00	11.6%	2.6%	0.106	0.051	0.04%
Shuaiba Industrial	0.153	-0.001	-0.65%	0.84	12.73	7.79	15	-5.6%	-32.0%	0.00	0.01	6.6%	5.4%	0.310	0.137	0.03%
National Cleaning	0.037	0.002	4.29%	0.29	NM	0.00	8	7.7%	-35.9%	0.00	0.00	-13.9%	-4.1%	0.080	0.031	0.02%
Fujairah Cement Industries	0.039	0.000	0.00%	0.19	NM	0.00	14	-0.3%	-27.0%	0.00	0.00	-12.7%	-6.3%	0.069	0.028	0.03%
Mubarrad Holding	0.072	-0.003	-4.00%	0.56	6.09	6.67	12	-6.4%	-34.5%	0.00	0.00	9.3%	8.2%	0.130	0.071	0.03%
Specialities Group Holding	0.086	0.000	-0.12%	0.46	9.39	7.86	14	2.9%	-30.5%	0.01	0.07	5.0%	3.6%	0.157	0.076	0.03%
Salbookh Trading	0.018	0.000	1.10%	0.55	NM	0.00	2	-2.1%	-57.6%	0.00	0.01	-51.7%	-28.6%	0.072	0.016	0.00%
Metal and Recycling	0.074	0.000	0.00%	0.96	NM	0.00	7	0.0%	-22.1%	0.00	0.00	-12.0%	-2.0%	0.136	0.068	0.01%
Equipment Holding	0.033	0.000	0.00%	0.52	NM	0.00	3	-4.1%	-40.2%	0.00	0.00	-11.1%	-3.2%	0.079	0.030	0.01%
Jassim Transport & Stevedoring	0.329	0.010	3.13%	1.11	14.35	5.02	49	0.0%	-19.2%	0.01	0.12	8.0%	6.3%	0.450	0.307	0.11%
Total Industrials - 24 Companies							3,477			9.23	15.65					7.72%

DAILY MARKET COVERAGE REPORT

NIC MENA SECURITIES - RESEARCH AND STUDIES DEP



Insurance	Price			Valuation Multiples			MKT Cap	Price Performance		Trading Indicators		ROE	ROA	52 Week (KD)		MKT Cap
Company	Close (KD)	Day Δ	Day % Δ	PBV(X)	PE(X)	DY%	Mn KD	MTD(%)	YTD (%)	Value (Mn KD)	(Mn Shrs)	(%)	(%)	High	Low	%
Gulf Insurance Group	1.016	0.000	0.00%	1.18	4.35	10.43	288	2.1%	-5.0%	0.00	0.00	28.6%	5.5%	1.200	0.867	0.64%
Al Ahleia Insurance	0.563	0.000	0.00%	0.94	7.77	6.22	122	18.3%	11.5%	0.00	0.00	12.5%	4.4%	0.612	0.453	0.27%
Kuwait Insurance	0.460	0.014	3.14%	0.69	7.13	7.40	85	2.2%	18.9%	0.00	0.00	10.4%	6.1%	0.497	0.379	0.19%
Kuwait Reinsurance	0.295	0.000	0.00%	1.07	10.42	1.55	70	0.0%	16.9%	0.00	0.00	10.8%	3.4%	0.373	0.217	0.16%
Bahrain Kuwait Insurance	0.191	0.000	0.00%	1.33	11.98	8.44	29	0.0%	0.0%	0.00	0.00	11.0%	2.1%	0.191	0.191	0.06%
Warba Insurance and Reinsurance	0.129	0.006	4.88%	0.55	8.97	8.13	22	0.0%	-18.9%	0.00	0.00	6.2%	2.1%	0.176	0.119	0.05%
First Takaful Insurance	0.048	0.000	0.00%	0.63	296.88	0.00	5	0.0%	-5.0%	0.00	0.00	0.2%	0.1%	0.081	0.034	0.01%
Wethaq Takaful Insurance	0.037	0.000	0.00%	0.33	19.37	0.00	4	3.6%	-27.3%	0.00	0.00	1.7%	1.7%	0.102	0.024	0.01%
Total Insurance - 8 Companies							625			0.00	0.00					1.39%

Energy	Price			Valuation Multiples			MKT Cap	Price Performance		Trading Indicators		ROE	ROA	52 Week (KD)		MKT Cap
Company	Close (KD)	Day Δ	Day % Δ	PBV(X)	PE(X)	DY%	Mn KD	MTD(%)	YTD (%)	Value (Mn KD)	(Mn Shrs)	(%)	(%)	High	Low	%
National Petroleum Services	0.750	-0.017	-2.22%	1.89	13.44	4.56	73	0.0%	-8.5%	0.00	0.00	14.5%	11.6%	0.880	0.625	0.16%
Independent Petroleum Group	0.430	-0.011	-2.49%	0.79	14.40	6.80	78	-9.1%	-26.9%	0.01	0.02	5.5%	1.0%	0.614	0.368	0.17%
Burgan for Well Drilling Trading and Maintenance	0.116	0.004	3.57%	0.40	9.11	2.60	28	0.9%	-18.9%	0.00	0.00	4.4%	1.4%	0.172	0.100	0.06%
Energy House Holding	0.021	0.002	10.22%	0.74	NM	0.00	15	6.8%	-67.5%	0.00	0.15	-1.4%	-2.5%	0.086	0.019	0.03%
Gulf Petroleum Investment	0.015	-0.001	-3.14%	0.22	NM	0.00	7	-4.9%	-37.1%	0.03	1.63	-4.0%	-2.6%	0.031	0.013	0.02%
Senegy Holding	0.038	-0.001	-1.30%	0.76	45.24	0.00	8	-5.0%	-22.4%	0.00	0.00	1.7%	1.4%	0.063	0.036	0.02%
Total Energy - 6 Companies							209			0.04	1.80					0.46%

DAILY MARKET COVERAGE REPORT

NIC MENA SECURITIES - RESEARCH AND STUDIES DEP



Real Estate	Price		Valuation Multiples					MKT Cap	Performance		Trading Indicators		ROE	ROA	2 Week (KD)		MKT Cap
Company	Close (KD)	Day Δ	Day % Δ	PBV(X)	PE(X)	DY%	Mn KD	MTD(%)	YTD (%)	Value (Mn KD)	(Mn Shrs)	(%)	(%)	High	Low	%	
Mabane Co.	0.850	0.000	0.00%	1.94	17.98	1.55	1,055	-1.5%	13.6%	1.06	1.24	11.2%	5.4%	0.910	0.715	2.34%	
Salhia Real Estate	0.468	-0.005	-1.06%	1.55	20.00	3.02	241	4.9%	-7.1%	0.52	1.10	7.9%	3.2%	0.578	0.428	0.54%	
Commercial Real Estate	0.100	0.001	1.21%	0.61	10.28	5.06	176	0.9%	-20.0%	0.78	7.80	6.2%	3.3%	0.140	0.094	0.39%	
National Real Estate	0.133	0.004	3.10%	0.74	1.20	0.00	247	-0.7%	-27.8%	0.27	1.99	64.5%	38.6%	0.212	0.125	0.55%	
Tamdeen Real Estate	0.308	0.000	0.00%	0.60	7.09	3.25	124	-5.2%	-9.1%	0.00	0.00	9.2%	3.9%	0.375	0.296	0.27%	
Kuwait Real Estate	0.101	0.001	1.00%	0.74	12.25	2.92	93	-0.4%	-42.1%	0.18	1.77	6.0%	2.5%	0.187	0.097	0.21%	
United Real Estate	0.077	0.000	0.00%	0.48	240.63	0.00	83	-0.9%	2.1%	0.00	0.00	0.2%	-0.1%	0.121	0.064	0.18%	
First Dubai for Real Estate Development	0.046	0.001	1.78%	0.44	30.74	0.00	34	-0.2%	-56.4%	0.02	0.46	1.5%	1.2%	0.120	0.044	0.07%	
Al Mazaya Holding	0.045	0.000	0.22%	0.46	40.82	0.00	28	-4.5%	-41.3%	0.03	0.77	1.1%	0.6%	0.089	0.043	0.06%	
Ajial Real Estate Entertainment	0.282	0.000	0.00%	0.42	17.40	1.77	55	2.5%	-7.2%	0.00	0.00	2.4%	2.0%	0.345	0.263	0.12%	
Injazzat Real Estate Development	0.077	0.000	0.00%	0.46	6.51	6.53	26	-8.8%	-23.4%	0.00	0.05	7.0%	3.6%	0.114	0.070	0.06%	
Munshaat Real Estate Projects	0.064	0.000	0.00%	1.97	12.04	0.00	21	-9.0%	-10.9%	0.00	0.00	17.4%	1.5%	0.081	0.052	0.05%	
Aayan Real Estate	0.062	0.000	0.00%	0.44	60.00	0.00	26	1.8%	-29.5%	0.02	0.25	0.7%	1.4%	0.105	0.056	0.06%	
Al Argan International Real Estate	0.088	0.000	0.00%	0.29	32.05	0.00	22	15.1%	-25.2%	0.00	0.06	0.9%	0.3%	0.144	0.073	0.05%	
Al-Enmaa Real Estate	0.059	-0.006	-8.63%	0.65	NM	0.00	27	-12.7%	-20.4%	0.08	1.27	-5.9%	NM	0.091	0.056	0.06%	
Arkan Al Kuwait Real Estate	0.125	0.000	0.00%	0.88	12.18	4.80	31	2.5%	0.8%	0.00	0.00	7.4%	2.3%	0.152	0.113	0.07%	
Kuwait Business Town Real Estate	0.052	0.001	1.36%	0.65	14.48	0.00	30	4.6%	-36.1%	0.06	1.24	3.8%	2.8%	0.100	0.046	0.07%	
Dalqan Real Estate	0.219	0.004	1.86%	1.96	202.78	0.00	13	2.3%	0.9%	0.01	0.05	1.0%	1.0%	0.282	0.195	0.03%	
Sokouk Holding	0.023	-0.001	-5.33%	0.54	NM	0.00	13	-14.1%	-29.1%	0.00	0.15	-2.9%	-1.7%	0.038	0.020	0.03%	
Tijara and Realestate Investment	0.048	0.001	1.68%	0.44	7.40	6.32	18	1.7%	-20.9%	0.01	0.22	6.0%	3.2%	0.089	0.044	0.04%	
Al-Arabiya Real Estate	0.033	0.000	-0.89%	0.40	NM	0.00	17	9.5%	-20.5%	0.01	0.16	-23.1%	-7.3%	0.052	0.026	0.04%	
Aqar Real Estate Investments	0.059	0.000	0.00%	0.49	18.91	5.63	14	0.5%	-24.9%	0.00	0.00	2.6%	2.1%	0.098	0.052	0.03%	
Mashaer Holding	0.055	0.000	-0.37%	0.65	NM	0.00	10	2.4%	-22.0%	0.00	0.01	-6.5%	-3.2%	0.086	0.050	0.02%	
Dar Al Thuraya Real Estate	0.170	0.000	0.00%	1.47	25.07	0.00	25	0.0%	61.9%	0.00	0.00	6.0%	5.3%	0.172	0.092	0.06%	
Osos Holding Group	0.105	0.003	2.94%	0.92	8.36	9.80	11	8.2%	0.0%	0.00	0.00	11.2%	7.1%	0.147	0.094	0.02%	
Al Massaleh Real Estate	0.041	0.000	0.00%	0.68	NM	0.00	10	-1.4%	-21.3%	0.00	0.00	-15.4%	-3.2%	0.060	0.036	0.02%	
Kuwait Remal Real Estate	0.011	0.000	2.75%	1.44	NM	0.00	3	-1.8%	-41.4%	0.00	0.11	-110.3%	-12.4%	0.024	0.010	0.01%	
Kuwait Real Estate Holding	0.034	-0.002	-5.00%	0.64	12.39	0.00	6	-7.6%	-35.2%	0.00	0.00	5.1%	1.7%	0.059	0.032	0.01%	
Taameer Real Estate Investment	0.020	0.000	0.51%	0.32	NM	0.00	4	-2.9%	-51.8%	0.00	0.01	-6.5%	-4.9%	0.054	0.018	0.01%	
Sanam Real Estate	0.060	0.001	1.35%	0.79	26.79	0.00	7	0.8%	-24.0%	0.00	0.01	2.9%	2.8%	0.100	0.053	0.02%	
Mena Real Estate	0.031	0.001	1.64%	0.27	NM	0.00	4	-6.1%	-38.2%	0.00	0.11	-6.8%	-5.4%	0.105	0.030	0.01%	
Al Masaken International Real Estate Developmen	0.030	0.000	0.00%	0.48	NM	0.00	3	6.4%	-31.7%	0.00	0.00	-1.1%	-0.4%	0.069	0.028	0.01%	
Real Estate Trade Centers	0.049	-0.001	-1.02%	0.27	20.29	0.00	7	-14.8%	-30.7%	0.00	0.01	1.3%	1.1%	0.123	0.043	0.01%	
Land United Real Estate	0.068	0.000	0.00%	0.60	NM	0.00	10	0.0%	-27.6%	0.00	0.00	-4.8%	-1.5%	0.144	0.052	0.02%	
Total Real Estate - 34 Companies							2,494			3.05	18.85					5.54%	

DAILY MARKET COVERAGE REPORT

NIC MENA SECURITIES - RESEARCH AND STUDIES DEP



	Close (KD)	Day Δ	Day % Δ	PBV(X)	PE(X)	DY%	Mn KD	MTD(%)	YTD (%)	Value (Mn KD)	(Mn Shrs)	(%)	(%)	High	Low	%
Automated Systems	0.078	0.000	0.00%	0.69	NM	0.00	8	-3.7%	-17.0%	0.00	0.00	-3.4%	-3.0%	0.116	0.074	0.02%
Total Technology - 1 Companies				0.69	NM	0.0%	8			0.00	0.00	-3.40%	-2.96%			0.02%

Telecom	Price			Valuation Multiples			MKT Cap	Price Performance		Trading Indicators		ROE	ROA	52 Week (KD)		MKT Cap
Company	Close (KD)	Day Δ	Day % Δ	PBV(X)	PE(X)	DY%	Mn KD	MTD(%)	YTD (%)	Value (Mn KD)	(Mn Shrs)	(%)	(%)	High	Low	%
Mobile Telecommunications	0.587	0.002	0.34%	2.14	13.87	5.64	2,540	0.2%	-1.3%	1.34	2.28	15.6%	4.3%	0.698	0.564	5.64%
Kuwait Telecommunications	0.561	0.009	1.63%	2.52	12.90	5.43	560	1.3%	31.2%	0.08	0.14	20.1%	10.9%	1.189	0.418	1.24%
National Mobile Telecommunications	0.856	-0.034	-3.82%	0.82	12.97	3.93	429	-7.0%	37.2%	0.03	0.04	6.2%	3.6%	1.280	0.615	0.95%
AAN Digital Services	0.016	0.000	0.00%	0.60	NM	0.00	14	0.0%	-2.4%	0.00	0.00	NM	NM	0.020	0.015	0.03%
Hayat Communications	0.060	-0.001	-1.96%	0.48	NM	0.00	5	-3.2%	-43.4%	0.00	0.01	-0.7%	-0.3%	0.124	0.052	0.01%
Telecom - 5 Companies							3,548			1.45	2.46					7.88%

Utilities	Price			Valuation Multiples			MKT Cap	Price Performance		Trading Indicators		ROE	ROA	52 Week (KD)		MKT Cap
Company	Close (KD)	Day Δ	Day % Δ	PBV(X)	PE(X)	DY%	Mn KD	MTD(%)	YTD (%)	Value (Mn KD)	(Mn Shrs)	(%)	(%)	High	Low	%
Shamal Az-Zour Al-Oula Power & Water	0.192	0.002	1.05%	2.16	14.70	9.47	211	-1.5%	-15.8%	0.09	0.49	19.1%	2.9%	0.247	0.189	0.47%
Total Utilities - 1 Companies							211			0.09	0.49					0.47%

Total Market 157 Companies				1.99	30.63	4.10	45,025			52.27	137.83					100%
-----------------------------------	--	--	--	-------------	--------------	-------------	---------------	--	--	--------------	---------------	--	--	--	--	-------------

End of Report

The information contained in this document is proprietary to NIC and is for use only by the persons to whom it is issued. This document is confidential and may not be distributed either in part or in whole without the express agreement of NIC. It is intended solely for the use of the individual or entity to whom it is addressed and others authorized to receive it.

Note : ROE and ROA is calculated based on LFY net profit & shareholders' equity and LFY Operating Profits & Total Assets

Sources : National Investments Company Research and Studies Departments, Boursa, Refinitiv.



شركة الاستثمار الوطنية
NATIONAL INVESTMENTS COMPANY

Sharq, Al Mutanabi Street, Khaleejia Tower | P.O. Box 25667, Safat 13117, Kuwait

T.: +965 2226 6666 | Fax: +965 2226 6793 | www.nic.com.kw